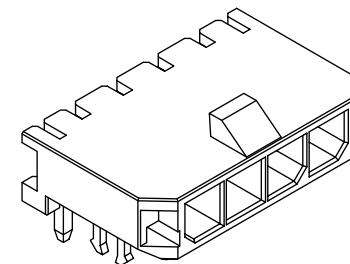
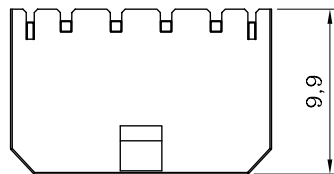
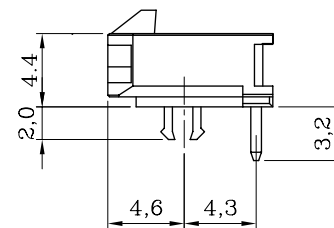
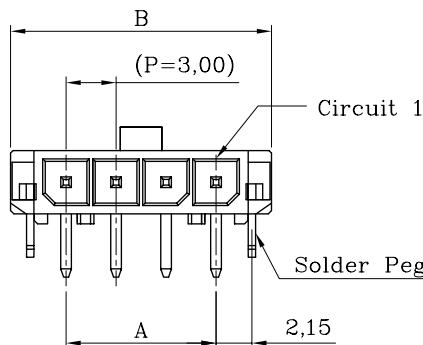


ORDER INFORMATION AND DIMENSION:

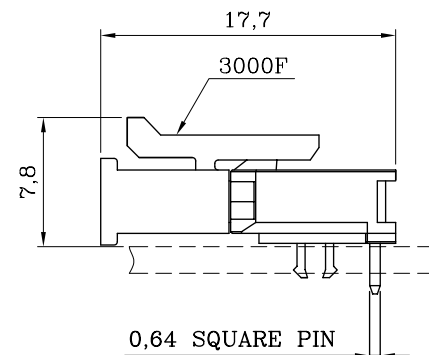
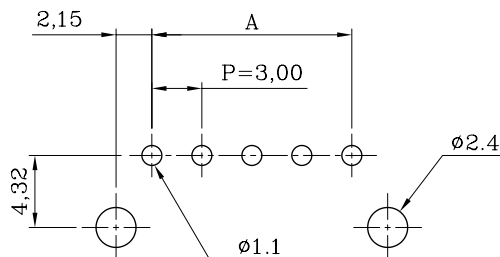
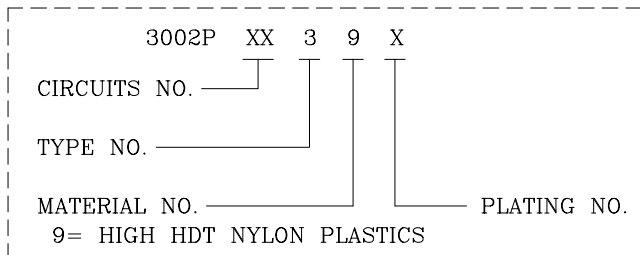
| Circuits | Part No. (Matte tin-plated) | Dimension | |
|----------|--------------------------------|-----------|------|
| | | A | B |
| 2 | 3002P02 39V | 3.00 | 9.7 |
| 3 | 3002P03 39V | 6.00 | 12.7 |
| 4 | 3002P04 39V | 9.00 | 15.7 |
| 5 | 3002P05 39V | 12.00 | 18.7 |
| 6 | 3002P06 39V | 15.00 | 21.7 |
| 7 | 3002P07 39V | 18.00 | 24.7 |
| 8 | 3002P08 39V | 21.00 | 27.7 |
| 9 | 3002P09 39V | 24.00 | 30.7 |
| 10 | 3002P10 39V | 27.00 | 33.7 |
| 11 | 3002P11 39V | 30.00 | 36.7 |
| 12 | 3002P12 39V | 33.00 | 39.7 |



ISOMETRIC VIEW



DESCRIPTION OF ORDER NO.:



ASSEMBLY LAYOUT

NOTES:

- MATERIAL:
BASE: HIGH HDT NYLON 94V-0, BLACK COLOR
CONTACT PIN: BRASS
SOLDER PEG: BRASS, MATTE TIN-PLATED
- MATES WITH 3000F SINGLE-ROW SERIES PLUG HOUSING.
- DESCRIPTION OF COLOR CODE:
LEGEND: 3002PXX39X-X (-X: COLOR CODE)
R=RED, E=BLUE, H=GRAY, M=GREEN, S=IVORY (NATURAL)
I=BRICK RED,
- REPLACEMENT OF HALOGEN-FREE PRODUCT:
LEGEND: 3002PXX39X-XNH (NH: HALOGEN-FREE)
LEGEND: 3002PXX39X-BNH (B=BLACK COLOR)
- INFORMATION IN THIS DRAWING IS NOT CONSIDERED AS FINAL.

| DESCRIPTION OF PLATING CODE: | |
|------------------------------|-----------------------------|
| V= MATTE TIN-PLATED | A= SELECT GOLD FLASH-PLATED |

P.C. BOARD LAYOUT
(COMPONENT SIDE)

| | |
|--------------------------|-----------------|
| MATERIAL: SEE NOTES | |
| FINISH(COLOR): SEE NOTES | |
| W1 | NEW RELEASE |
| REV. | REVISION RECORD |



| | | | | | |
|---|-----------------|-----------------|-------------|-----------------|---|
| GWT 850 °C Rated | | Sales Drawing | | | |
| LANDWIN 聯盈電子股份有限公司 LANDWIN ELECTRONIC CORP. | | | | | |
| GENERAL TOLERANCE: | PROJECTION | SCALE | UNIT | SHEET NO. | REV |
| | | FREE | MM | 1 / 1 | W1 |
| | DRAWN R.G. | DRAW NO. | | | |
| | CHECKED J.L.Lin | (CQ) 3002PXX39X | | | |
| | APPD H.Y.Lin | TITLE: | | | |
| W1 | NEW RELEASE | 31-DEC-14' | ANGULAR ±3° | DATE 31-DEC-14' | 3.00 PITCH SINGLE-ROW R/A HEADER (TYPE-3) |
| REV. | REVISION RECORD | DATE | | | |