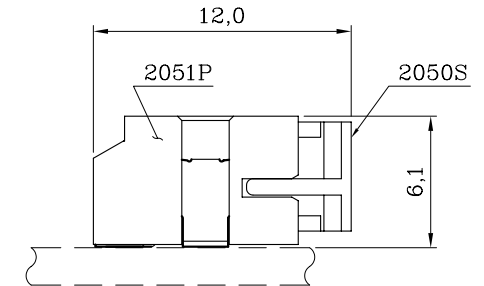
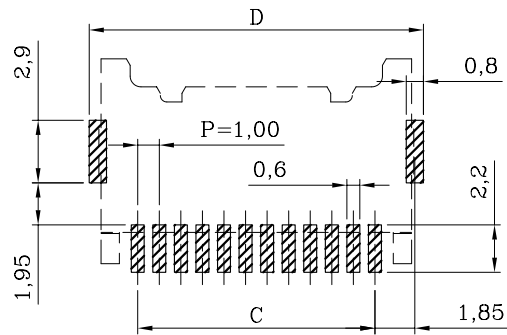
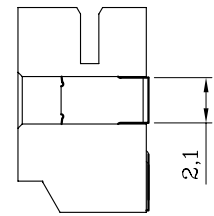
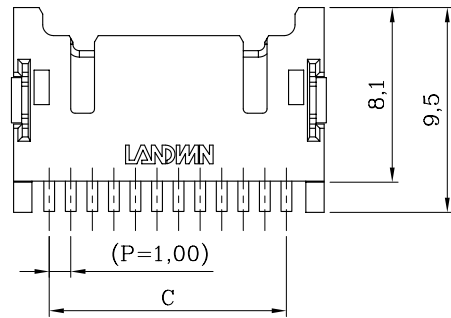
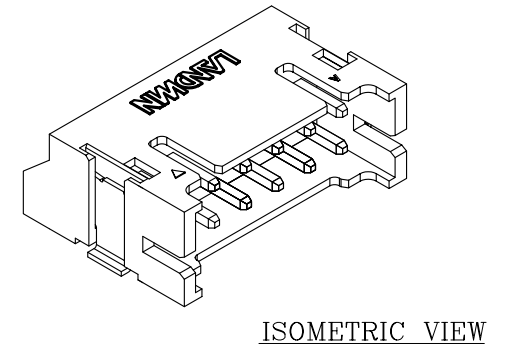
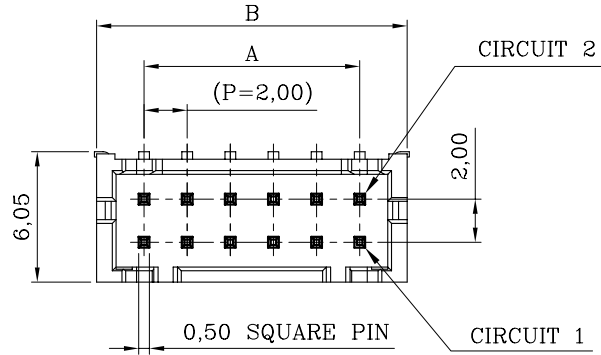
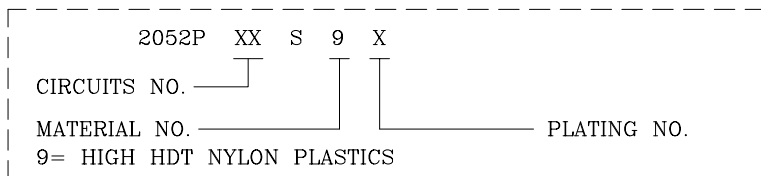


ORDER INFORMATION AND DIMENSION:

Circuits	Part No. (REFLOW TIN)	Dimension			
		A	B	C	D
4	2052P04S9T	2.0	6.8	3.0	7.5
6	2052P06S9T	4.0	8.8	5.0	9.5
8	2052P08S9T	6.0	10.8	7.0	11.5
10	2052P10S9T	8.0	12.8	9.0	13.5
12	2052P12S9T	10.0	14.8	11.0	15.5
14	2052P14S9T	12.0	16.8	13.0	17.5
16	2052P16S9T	14.0	18.8	15.0	19.5
18	2052P18S9T	16.0	20.8	17.0	21.5
20	2052P20S9T	18.0	22.8	19.0	23.5
22	2052P22S9T	20.0	24.8	21.0	25.5
24	2052P24S9T	22.0	26.8	23.0	27.5
26	2052P26S9T	24.0	28.8	25.0	29.5
28	2052P28S9T	26.0	30.8	27.0	31.5
30	2052P30S9T	28.0	32.8	29.0	33.5
32	2052P32S9T	30.0	34.8	31.0	35.5
34	2052P34S9T	32.0	36.8	33.0	37.5
36	2052P36S9T	34.0	38.8	35.0	39.5
38	2052P38S9T	36.0	40.8	37.0	41.5
40	2052P40S9T	38.0	42.8	39.0	43.5



DESCRIPTION OF ORDER NO.:



NOTES:

- MATERIAL:
BASE: HIGH HDT NYLON 94V-0, IVORY COLOR (NATURAL)
CONTACT PIN: BRASS
- MATES WITH 2050S DUAL-ROW SERIES PLUG HOUSING.
- DESCRIPTION OF COLOR CODE:
LEGEND: 2052PXXS9X-X (-X: COLOR CODE)
B=BLACK, C=COCONUT BROWN, E=BLUE, H=GRAY,
I=BRICK RED, M=GREEN, R=RED, W=BROWN
- REPLACEMENT OF HALOGEN-FREE PRODUCT:
LEGEND: 2052PXXS9X-XNH (NH: HALOGEN-FREE)
LEGEND: 2052PXXS9X-SNH (S=NATURAL COLOR)
- Q'ty per 330 mm Dia. Panel: 400 PCS/Embossed Tape Reel
- INFORMATION IN THIS DRAWING IS NOT CONSIDERED AS FINAL.

P.C. BOARD LAYOUT

MATERIAL: SEE NOTES	
FINISH(COLOR): SEE NOTES	
W1	NEW RELEASE
REV.	REVISION RECORD



Sales Drawing

聯盈電子股份有限公司
LANDWIN ELECTRONIC CORP.

GENERAL TOLERANCE:	PROJECTION	SCALE	UNIT	SHEET NO.	REV
	⊕	FREE	MM	1 / 1	W1
	DRAWN	R.G.	DRAW NO.		
	CHECKED	J.L.Lin	(CQ) 2052PXXS9X		
	APPD	H.Y.Lin	TITLE:		
	DATE	31-DEC-14'	2.00 PITCH DUAL-ROW RIGHT-ANGLE SMT-HEADER		

DESCRIPTION OF PLATING CODE	
T	REFLOW TIN-PLATED
1	GOLD FLASH-PLATED